



THE LANDING SHOPPING CENTER

Retail Space & Pad Site Available For Lease
63rd Street & Troost Avenue, Kansas City, Missouri



905 SF - 35,702 SF - IMMEDIATE OCCUPANCY

DEMOGRAPHICS

	1 mile	3 miles	5 miles
Estimated Population	14,310	106,248	240,294
Avg. Household Income	\$113,738	\$126,118	\$111,898

- Enclosed retail mall in the heart of Kansas City
- One of Kansas City's most identifiable locations
- Join Citi Trends, Kansas City Costume Co, Gen X, Rainbow Fashion, Wendy's, Yummi Crab Restaurant, and many more
- Excellent Midtown Center with easy access and great parking
- High traffic intersection of 63rd Street, Troost Avenue, Meyer Boulevard and The Paseo
- Pad site available for lease or build-to-suit



CLICK HERE TO VIEW MORE
LISTING INFORMATION

For More Information Contact:

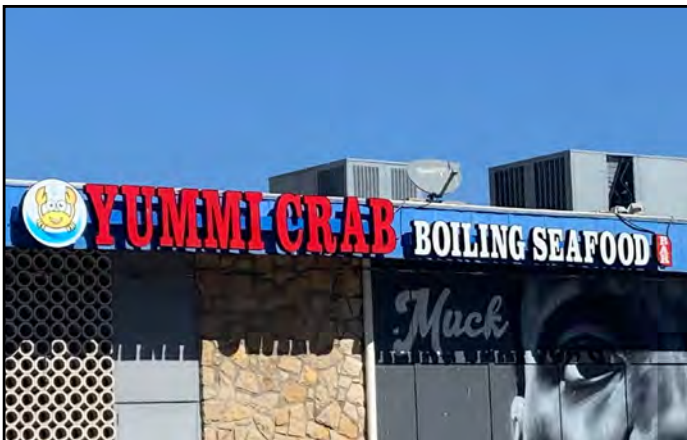
Exclusive Agents

BIANCA GATES | 816.412.7323 | bgates@blockandco.com

WILL SANDERS | 816.412.7311 | wsanders@blockandco.com

DAVID BLOCK | 816.412.7400 | dblock@blockandco.com

SHOPPING CENTER PHOTOS



SHOPPING CENTER NEIGHBORS





THE LANDING SHOPPING CENTER

Retail Space, Anchor Space & Pad Site For Lease
63rd Street & Troost Avenue, Kansas City, Missouri

SHOPPING CENTER NEIGHBORS



63 Brookside Apartments



63 Oak Townhomes



Brookside Gardens Event Center



Ewing Marion Kauffman School



Ewing Marion Kauffman School



Ewing Marion Kauffman School

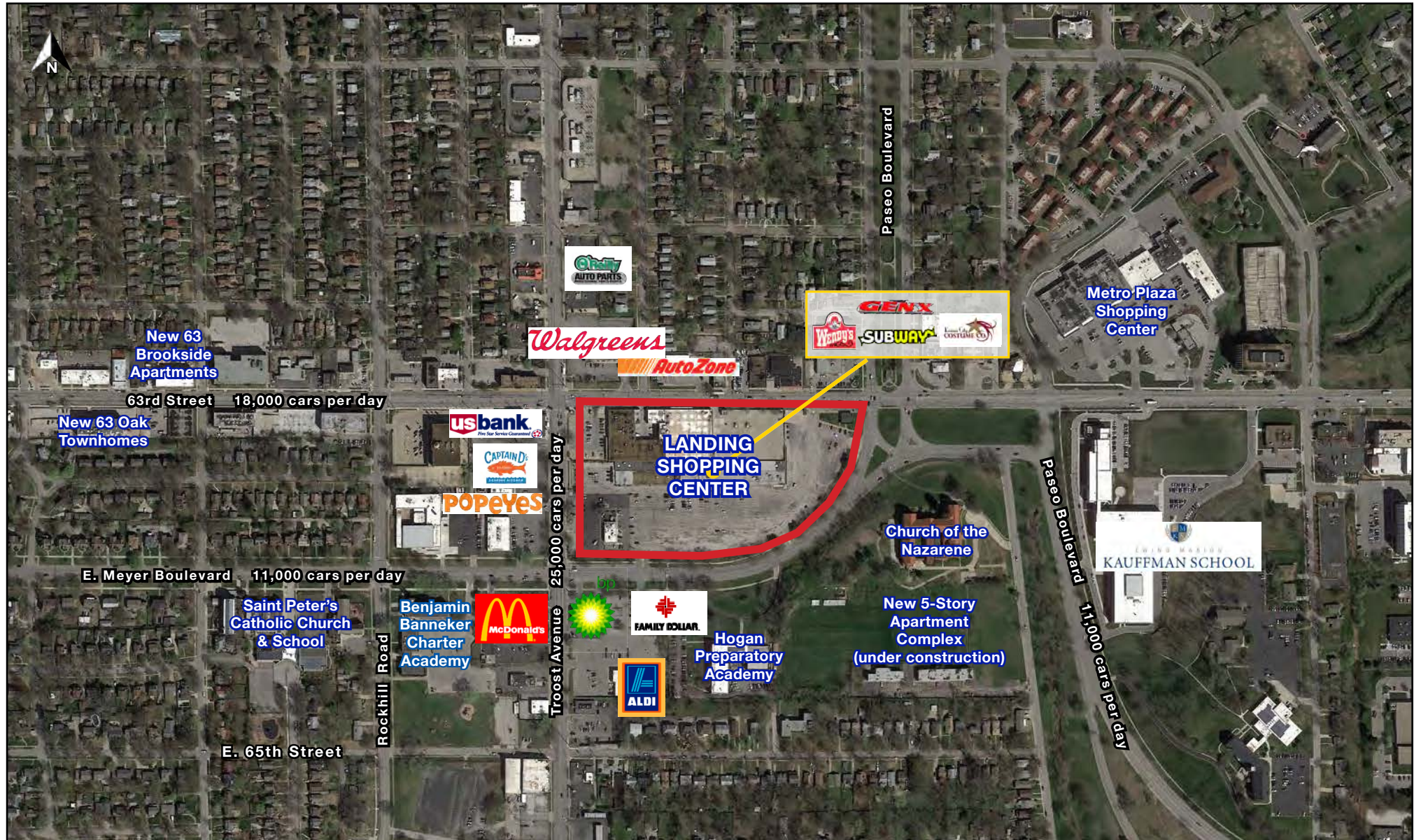


THE LANDING SHOPPING CENTER

Retail Space, Anchor Space, & Pad Site For Lease
63rd Street & Troost Avenue, Kansas City, Missouri

905 SF - 35,702 SF
AVAILABLE FOR LEASE
IMMEDIATE OCCUPANCY

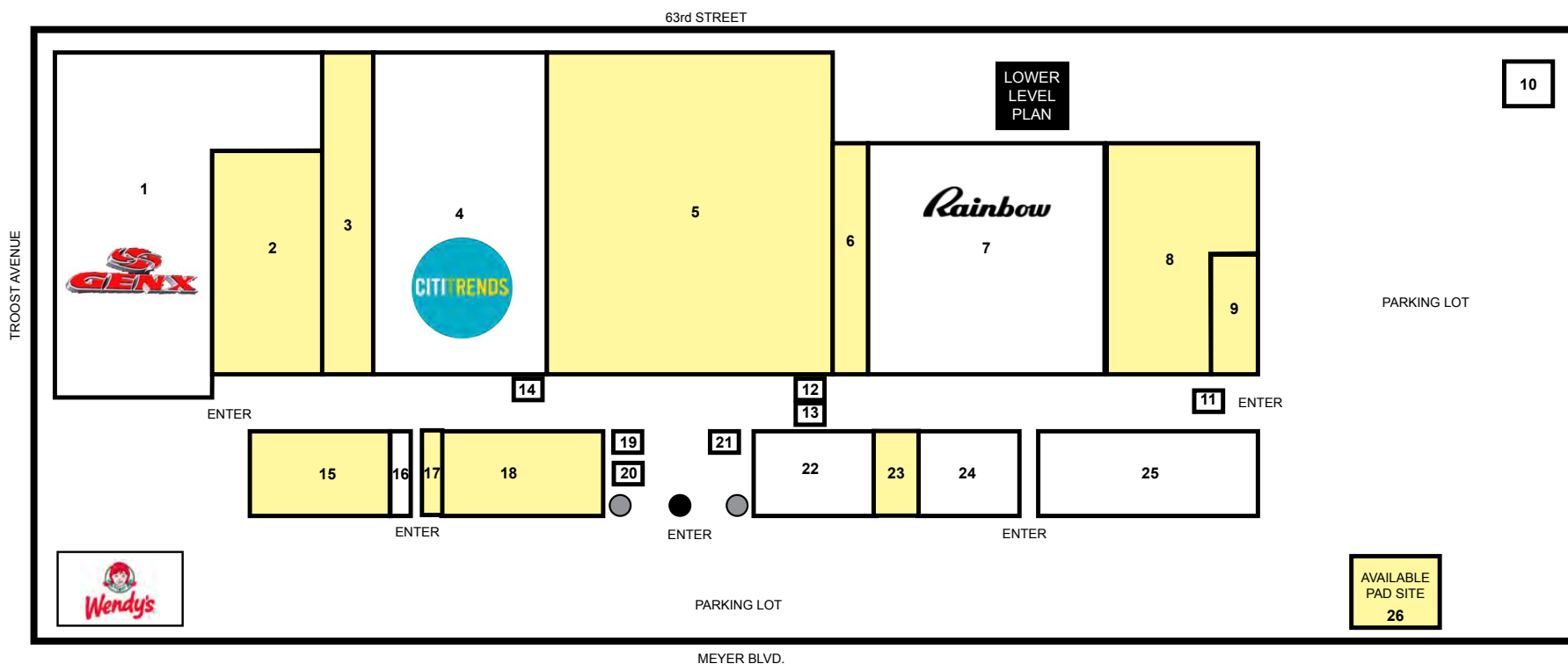
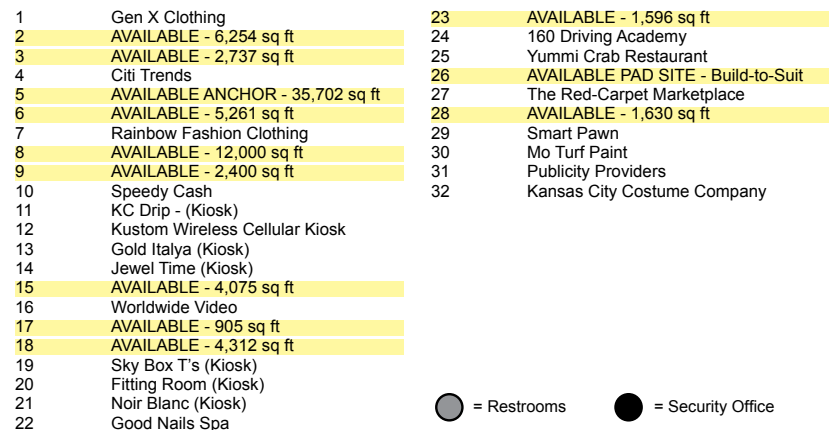
AERIAL





**905 SF - 35,702 SF
AVAILABLE FOR LEASE
IMMEDIATE OCCUPANCY**

SITE PLAN





THE LANDING SHOPPING CENTER

Retail Space, Anchor Space, & Pad Site For Lease
63rd Street & Troost Avenue, Kansas City, Missouri

905 SF - 35,702 SF
AVAILABLE FOR LEASE
IMMEDIATE OCCUPANCY

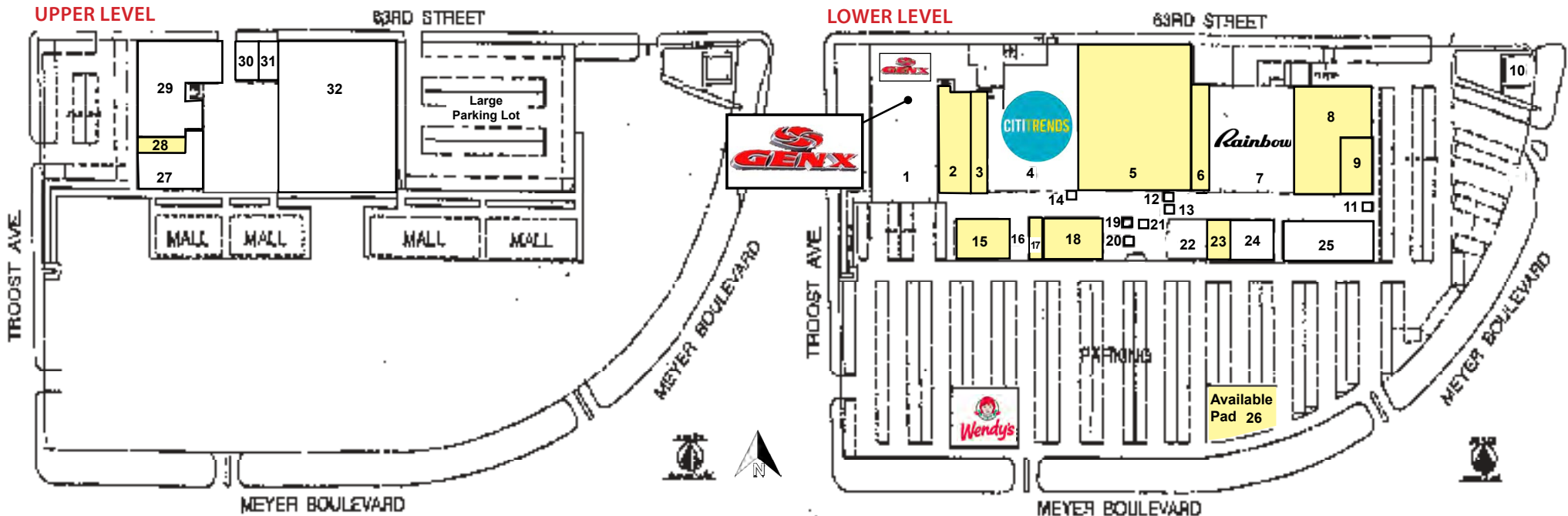
SITE PLAN

UPPER LEVEL

- 26 AVAILABLE PAD SITE - Build-to-Suit
- 27 The Red-Carpet Marketplace
- 28 AVAILABLE - 1,630 sq ft
- 29 Smart Pawn
- 30 Mo Turf Paint
- 31 Publicity Providers
- 32 Kansas City Costume Company

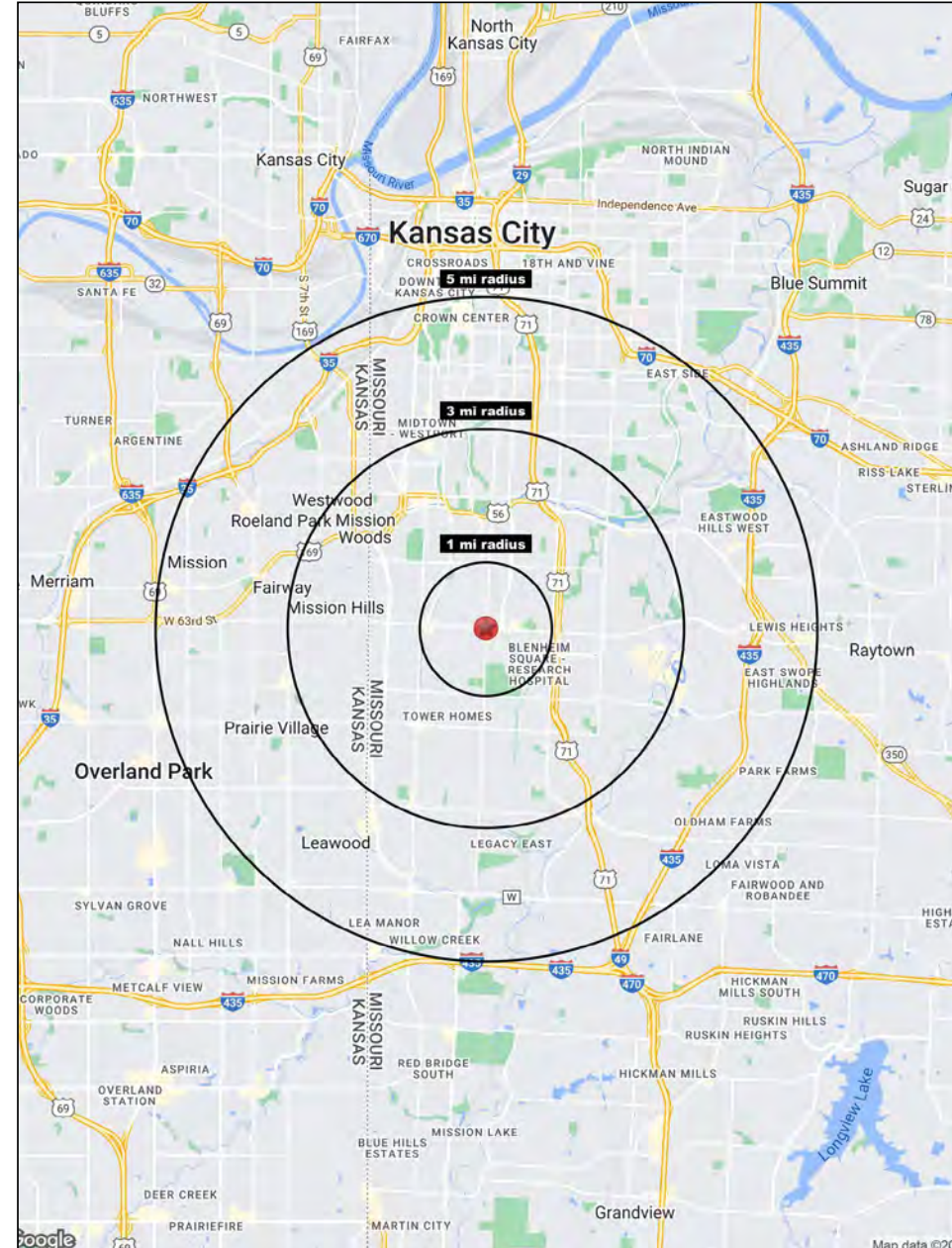
LOWER LEVEL

- 1 Gen X Clothing
- 2 AVAILABLE - 6,254 sq ft
- 3 AVAILABLE - 2,737 sq ft
- 4 Citi Trends
- 5 AVAILABLE ANCHOR - 35,702 sq ft
- 6 AVAILABLE - 5,261 sq ft
- 7 Rainbow Fashion Clothing
- 8 AVAILABLE - 12,000 sq ft
- 9 AVAILABLE - 2,400 sq ft
- 10 Speedy Cash
- 11 KC Drip - (Kiosk)
- 12 Kustom Wireless Cellular Kiosk
- 13 Gold Italya (Kiosk)
- 14 Jewel Time (Kiosk)
- 15 AVAILABLE - 4,075 sq ft
- 16 Worldwide Video
- 17 AVAILABLE - 905 sq ft
- 18 AVAILABLE - 4,312 sq ft
- 19 Sky Box T's (Kiosk)
- 20 Fitting Room (Kiosk)
- 21 Noir Blanc (Kiosk)
- 22 Good Nails Spa
- 23 AVAILABLE - 1,596 sq ft
- 24 160 Driving Academy
- 25 Yummi Crab





**905 SF - 35,702 SF
AVAILABLE FOR LEASE
IMMEDIATE OCCUPANCY**



Block & Company, Inc., Realtors | 605 W. 47th Street, Ste. 200, Kansas City, MO 64112 | 816.753.6000 | www.blockandco.com





THE LANDING SHOPPING CENTER

Retail Space, Anchor Space & Pad Site For Lease

63rd Street & Troost Avenue, Kansas City, Missouri

63rd & Troost Avenue Kansas City, MO	1 mi radius	3 mi radius	5 mi radius
Population			
2024 Estimated Population	14,310	106,248	240,294
2029 Projected Population	14,297	105,204	240,109
2020 Census Population	14,790	105,983	236,512
2010 Census Population	13,832	102,637	227,895
Projected Annual Growth 2024 to 2029	-	-0.2%	-
Historical Annual Growth 2010 to 2024	0.2%	0.3%	0.4%
2024 Median Age	38.2	36.8	36.5
Households			
2024 Estimated Households	6,607	49,442	112,822
2029 Projected Households	6,623	49,088	113,283
2020 Census Households	6,631	48,291	108,543
2010 Census Households	6,112	46,415	104,027
Projected Annual Growth 2024 to 2029	-	-0.1%	-
Historical Annual Growth 2010 to 2024	0.6%	0.5%	0.6%
Race and Ethnicity			
2024 Estimated White	61.0%	58.2%	58.9%
2024 Estimated Black or African American	31.3%	32.6%	29.4%
2024 Estimated Asian or Pacific Islander	1.3%	1.9%	2.1%
2024 Estimated American Indian or Native Alaskan	0.2%	0.3%	0.4%
2024 Estimated Other Races	6.1%	7.0%	9.2%
2024 Estimated Hispanic	5.7%	6.5%	9.4%
Income			
2024 Estimated Average Household Income	\$113,738	\$126,118	\$111,858
2024 Estimated Median Household Income	\$91,047	\$90,588	\$82,882
2024 Estimated Per Capita Income	\$52,570	\$58,815	\$52,652
Education (Age 25+)			
2024 Estimated Elementary (Grade Level 0 to 8)	1.5%	1.6%	2.1%
2024 Estimated Some High School (Grade Level 9 to 11)	2.7%	4.3%	4.1%
2024 Estimated High School Graduate	15.3%	19.5%	20.3%
2024 Estimated Some College	19.7%	17.5%	18.6%
2024 Estimated Associates Degree Only	5.0%	5.7%	6.3%
2024 Estimated Bachelors Degree Only	30.4%	28.6%	28.4%
2024 Estimated Graduate Degree	25.5%	22.7%	20.2%
Business			
2024 Estimated Total Businesses	919	5,709	12,289
2024 Estimated Total Employees	6,608	59,208	146,787
2024 Estimated Employee Population per Business	7.2	10.4	11.9
2024 Estimated Residential Population per Business	15.6	18.6	19.6

©2025, Sites USA, Chandler, Arizona, 480-491-1112 Demographic Source: Applied Geographic Solutions 11/2024, TIGER Geography - RS1